

## Access

This document lays out expectations and guidelines for all users of Sedgwick Reserve. Access is contingent upon:

1. An advanced visit reservation using the UCNRS online reservation system at <http://rams.ucnrs.org/>. Do not come to the reserve unless your visit has been approved.
2. Only individuals listed and approved on the reservation are allowed on the property. Do not invite guests or anyone not specifically approved on the reservation.
3. Protect the Reserve's security by not sharing the gate code.
4. Ensure that everyone listed in a RAMS reservation has filled out a liability waiver available here via [DocuSign](#)
5. Establish a safety plan that includes equipment, a safety buddy, and a daily check-in/check-out system.
6. Observe the 15 mph speed limit to protect wildlife and minimize dust.
7. Sign in and out every time you visit using the computer in the Tipton Lobby [Sign In / Sign Out Form](#).
8. Follow all of the rules and safety guidelines outlined in this document below ([page 3](#)).
9. Treat the facilities with respect, and leave the spaces cleaner than you found them.
10. All work conducted at Sedgwick must be acknowledged and cited using DOI: 10.21973/N3C08R

## Facilities

**SEDGWICK RESERVE (3566 Brinkerhoff Ave, Santa Ynez, CA 93460)** is one of seven NRS Reserves administered by UC Santa Barbara. The property encompasses two intact watersheds encompassing 5980 acres and is located 15 miles east of Los Olivos in the Santa Ynez Valley. Administrative and lodging facilities are located in a ten-acre Field Station.

**DAY USE:** Sign in upon arrival either at the computer kiosk in the Tipton Meeting House or remotely here: [Sign In / Sign Out Form](#)

You may also pick up a map and borrow a safety kit. Hand sanitizer is available next to the outhouse, which is cleaned daily and serviced weekly. These are the only facilities available to day-users, so plan your field trips accordingly.

**OVERNIGHT USE.** Use RAMS to request access to kitchen facilities, overnight accommodations, and office / lab space.

**WI-FI:** Researchers can access password-free WiFi coverage outside the Tipton Meeting House and Ranch house. Several networks with passwords are available throughout the complex.

**ACOUSTIC AND PHOTO SURVEILLANCE:** Acoustic and photo surveillance of environmental conditions, including wildlife monitoring, is conducted for research purposes at Sedgwick Reserve.



## Protection of Research Sites

To ensure the integrity of research sites, we ask that all users be careful not to drive over or trample research sites or remove stakes, pipes, flags, traps, and other miscellaneous items that may belong to researchers. Include where you plan to go on your reservation so we can coordinate activities on the reserve. Only go to areas where you are approved to work.

There is no unmanaged recreational use at Sedgwick, which includes hiking, running, mountain biking, or driving tours. Groups visiting for conferences may hike the Quail Trail SO1 –SO25 –S09 – SO13 – SO12–SO1 unaccompanied. Otherwise a docent-led tour must be reserved for other locations.

To further protect the integrity of Sedgwick for research, we ask our users to take great care to prevent the introduction of weeds, animals, insects, pathogens or other foreign species onto the Reserve. This includes fire wood, which can carry oak diseases. Do not bring any animal or plant material onto the reserve.

## Rules and Regulations

1. All people, activities, and locations must be approved in advance via the RAMS system. Do not come to the reserve without an approved visit.
2. All visitors must have an up-to-date signed [liability waiver](#).
3. Collecting of any kind is restricted to approved research use only.
4. Any drone use be included in the RAMS reservation, must follow guidelines of the [UC Merced UAS](#), have an approved flight plan.
5. To prevent invasive species or the introduction of disease, do not bring any wood, seeds, plant, or animals to the reserve.
6. No open flame is permitted at the field station, including campfires, fire pits, candles, or torches.
7. If you find any cultural artifacts, leave them exactly where you found them.
8. Biking is prohibited for the safety of wildlife, users, and the condition of the roads.
9. Smoking is prohibited on the reserve except in personal vehicles.
10. Park in designated parking areas; not in tall grass as catalytic converters can start fires
11. Obey all Road Closed to Vehicle Access signs. \*see Closures section
12. Respect the 15 mph maximum speed limit for wildlife safety, reducing dust, and other users.
13. Gates must be left as they were found (e.g., if a gate is closed and locked, close and lock it after passing). If the gate says “Closed to Vehicles,” do not drive on this road.
14. All firearms are prohibited on any University of California property of the Regents of UC at any time, pursuant to the California Penal Code, Sections 629.9 (h) and 629.9 (i).
15. Do not disturb reserve operations, water troughs, residents, livestock, equipment, or other experiments.
16. No dogs are permitted at Sedgwick, except for staff pets
17. Only go to reserve areas and facilities specifically approved by the use manager.
18. There is no unmanaged recreational use at Sedgwick, running, mountain biking, or driving tours.
19. Report trespassers, vandalism, wayward cows, unusual wildlife sightings, facilities that need attention, etc. to the office.
20. Be vigilant and use extreme caution when using the Reserve during fire season. Report smoke/fires and any suspicious behavior to 911 and the Sedgwick Office (805) 686-1941.

## Closures

**After rain, during Red Flag Warnings, heat advisories, and other periods of elevated fire risk, roads will be closed and locked.** Please check the map in the lobby for road closures. Access to the Reserve during these elevated risk periods may be restricted by the use manager and reservations may be canceled if during unsafe conditions. Use is contingent on the following preparations:

- Road closures are in effect to protect user safety, prevent fires, and maintain integrity of the roads.
- Anyone traveling on the Reserve in a vehicle with a catalytic converter must have a fire extinguisher and shovel with them.
- It is strongly recommended that work is done early in the day before peak heat hours and users take steps to prepare for the heat (see below).
- Maintaining communication with a safety buddy and Reserve staff.
- You will be responsible for all towing expenses, which often require special equipment.
- If you ignore the closed road advisory and leave ruts in the road, you will be charged for road repairs.

When roads are open, 4-wheel drive, high clearance vehicles are recommended for travel on all roads except the Lisque Creek Road and the lower Figueroa Creek Road, which are passable in a passenger car under most conditions. Off-road vehicle travel is prohibited without the Reserve Director's authorization.

**Following periods of >.20" of rain, the reserve roads (except for the improved main road from the Brinkerhoff gate to the Field Station) will be closed and locked.** Check with the Reserve Director prior to a scheduled trip for road condition advisories and possible restriction on vehicle travel.

## Emergency Contact Information

In case of Emergency, **dial 911** from your cell phone. In case of emergency, high points such as ridgelines almost always have cell coverage.

After summoning help, initiate our emergency phone tree by calling until you reach a Sedgwick staff person: Heather Constable (510) 604-1405, Angela Giordani (805) 904-5013, and Office staff (805) 686-1941.

Local hospital: [SYV Cottage Hospital](#): (805) 688-6431. In case of a snake bite, call the hospital immediately to inform that the patient is in route. The Reserve address is 3566 Brinkerhoff Road, Santa Ynez, CA 93460

**Campus Dispatch** (non-emergency): 805-893-3446

**Natural Reserve System Office:** (805) 893-4127

## Code of Conduct – UC Natural Reserve System

### EXPECTED BEHAVIOR

- All participants, visitors, staff, students, faculty, and vendors are to be treated with respect and consideration, valuing a diversity of views and opinions.

- Be considerate, respectful, and collaborative
- Respect for each other and the land is required.
- Our small staff does not include janitorial personnel. Please clean up after yourself and your work site.
- Alert station or campus personnel if you notice a dangerous situation or someone in distress.

### **UNACCEPTABLE BEHAVIOR**

- Harassment, intimidation or discrimination in any form.
- Physical or verbal abuse of any participants, visitors, staff, students, faculty, vendors, neighbors, or other Field Station guests.
- Verbal comments related to gender, sexual orientation, disability, physical appearance, body size, race, religion, national origin.
- Unwelcome physical contact.
- Inappropriate use of nudity and/or sexual images in Field Station spaces.
- Threatening or stalking any participants, visitors, staff, students, faculty, vendors, neighbors, or other Field Station guests.

### **CAMPUS CONDUCT RESOURCES**

UCSB Campus Advocacy Resources and Education (CARE): (805) 893-3778

UCSB Ombuds Office: (805) 893-3285

UCSB Title IX & Sexual Harassment Policy Compliance Office: (805) 893-2701

## Prepare for Sedgwick's Harsh Environment

Prolonged exposure to the heat during high temperatures (above 90 degrees) can be dangerous and result in heat-related illnesses. Work should be done early and late in the day during summer months. Basic expectations for summer safety include:

- Bring your own first aid kit with your personal medication
- Wear close-toed shoes
- Carry at least one quart (4 cups) required per person per hour
- Wear long-sleeved, light colored shirts (preferably a sun-shirt with SPF)
- Wear a high-SPF sunscreen and a wide-brimmed hat
- Bring an umbrella if you are working in an exposed area that lacks natural shade

### **FIRST AID**

There is a basic first aid kit in the cabinet under the map in the Tipton lobby. Bring your own kit if you need more specific items or medications. There is an Automated External Defibrillator (AED) hanging in the lobby of the Tipton Meeting House.

## POTENTIAL HAZARDS

Because Sedgwick Reserve is a wildland environment located some distance from urban facilities, precautions for potential hazards should be taken, similar to those for a back-country hike. The nearest medical facility is the [Santa Ynez Cottage Hospital](#), 700 Alamo Pintado Road, Solvang (805-688-6431). In the event of an emergency call 911 and notify the reserve director or any available reserve staff.

**Potential hazards include, but are not limited to, the following:**

**Rugged Terrain.** Sedgwick is a wildland environment. There are downed logs, unstable rocks, steep slopes, cliffs, ground squirrel holes, steep and narrow roads, and many other potential hazards. Use caution and good judgment. Roads and cliffs may be unstable.

**Rattlesnakes.** The Reserve is home to a wide assortment of snakes, but only one species is poisonous, the Western Pacific Rattlesnake (*Crotalus viridis*). The western Pacific rattlesnake is common throughout the Reserve from March to November. It is found in grassland, chaparral, coastal sage scrub, oak woodlands, gray pine forests and around buildings.

Use extreme caution when reaching to places not readily visible and hiking over rocks, logs, or in tall grass. Long pants and hiking boots are recommended. Snake gators are available in the lobby. Carry a cell phone.



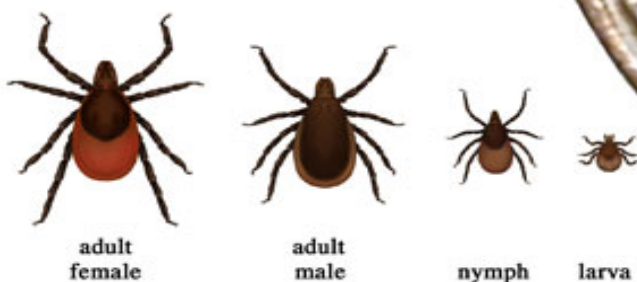
**DO NOT ATTEMPT TO CAPTURE, HANDLE OR MOVE RATTLESNAKES.** Leave them alone and they will leave you alone. If a snake is in a common area, please notify staff and they will relocate them. Keep doors closed.

**Poison Oak.** Not uncommon in riparian areas and shaded north-facing slopes. Easily avoided. If exposed to the leaves or stem of a poison oak plant (even if the plant is barren of foliage) wash affected areas with dish soap or Tech-Nu.

**Mountain Lions.** The Sedgwick Reserve is ideal mountain lion habitat and we frequently see evidence of their presence (tracks, freshly killed deer carcasses). While the threat of a lion attack on a human is extremely unlikely, it remains a possibility where people and lions co-exist. Avoid hiking alone, make noise and if confronted, throw things and yell. Do not run.

**Ticks.** Ticks in Santa Barbara County can carry Lyme disease. Routine body-checks for ticks are advised. If bitten, monitor symptoms and consult with a physician. Ticks are especially common in spring and summer but can be picked up throughout the year.

**Blacklegged Tick (*Ixodes scapularis*)**



**Hantavirus.** Deer mice (*Peromyscus maniculatus*) are common in the Santa Ynez Valley, a small percentage of which are known to carry the HARDS virus which stands for Hantavirus Acute Respiratory Distress Syndrome. The virus is one of a family of viruses carried by rodents and communicable to humans.



To protect reserve users and staff:

- **KEEP ALL DOORS CLOSED**
- Keep kitchen and dining areas clean
- Store food in bins and dishes in closed cabinets
- Wipe down countertops after every use
- Take trash and food garbage to the bins by the front gate daily
- Do not eat or leave food in rooms
- Report any signs of rodent infestations

**Symptoms of Hantavirus infection:** HARDS first manifests itself as mild flu-like symptoms (muscle ache, slight fever, and lethargy), usually two to six weeks after exposure to the virus. Acute respiratory distress may follow. If you experience flu-like symptoms and believe you may have had contact with rodents within the last 30 days, contact your physician immediately or go to the emergency room.

**Coronavirus (COVID-19) & Illness** Viruses are primarily spread between people during close contact. Recommended measures to prevent infection include frequent hand washing, maintaining physical distance from others, covering coughs and sneezes with a tissue, and keeping unwashed hands away from the face. Those infected with the virus may develop flu-like symptoms such as fever, cough, body aches, fatigue, and shortness of breath. Please stay home if you are feeling ill.

## CLEANING CHECKLIST

Before your departure, please leave time for cleaning to prepare the facilities for the next group. Cleaning up is an integral part of using the reserve. This helps us keep the facilities clean and functional, reduces the probability of mouse infestation, disease transmission, damage to the facilities, and helps out our very small staff.

KEEP DOORS CLOSED AT ALL TIMES!

- Take all garbage and recycling with you and put it in the bins that are just inside the front main gate.
- Turn off all lights and/or projector
- Wipe down tables and countertops
- Put tables and chairs back where you found them
- Remove ALL the food that you brought
- Make sure you have all of your personal belongings
- Clean all food scraps from sinks and counter areas
- Sweep and mop floors to make sure there are no crumbs or food left behind
- Clean the kitchen areas, including removing food from sink traps and removing coffee filters.
- Wash all dishes and utensils, wipe them dry, and store them away
- Wipe down bathroom fixtures that you have used - toilet, sink, counters, etc.
- Wipe off refrigerator shelves and/or drawers you used
- In warm/summer months turn off all AC units and fans
- In cooler/winter months turn heater to 65 degrees
- Close blinds to protect birds from colliding with windows
- Return snake gaiters, first aid kits, fire extinguishers, shovels, or anything you borrowed

You will be sent an invoice based on the information entered in your reservation. If there were changes, make sure to update your reservation with the correct number of people and facilities that were used. A cleaning fee may be added to your invoice.

Thank you,

The Sedgwick Staff